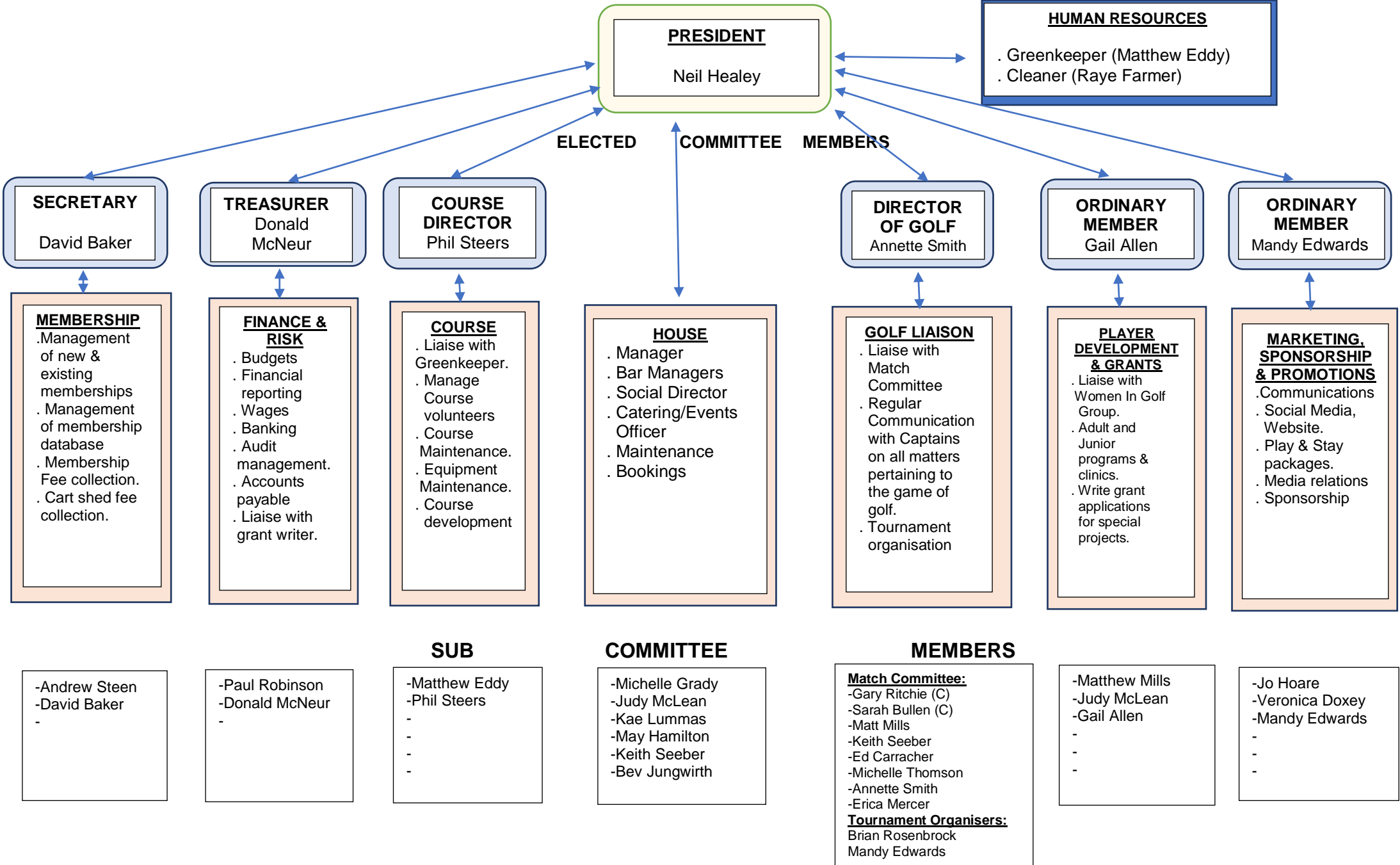


# 2021 EUROA GOLF CLUB ORGANISATIONAL STRUCTURE



**PRESIDENT**  
Neil Healey

**HUMAN RESOURCES**  
· Greenkeeper (Matthew Eddy)  
· Cleaner (Raye Farmer)

**SECRETARY**  
David Baker

**TREASURER**  
Donald McNeur

**COURSE DIRECTOR**  
Phil Steers

**DIRECTOR OF GOLF**  
Annette Smith

**ORDINARY MEMBER**  
Gail Allen

**ORDINARY MEMBER**  
Mandy Edwards

ELECTED COMMITTEE MEMBERS

**MEMBERSHIP**  
· Management of new & existing memberships  
· Management of membership database  
· Membership Fee collection.  
· Cart shed fee collection.

**FINANCE & RISK**  
· Budgets  
· Financial reporting  
· Wages  
· Banking  
· Audit management.  
· Accounts payable  
· Liaise with grant writer.

**COURSE**  
· Liaise with Greenkeeper.  
· Manage Course volunteers  
· Course Maintenance.  
· Equipment Maintenance.  
· Course development

**HOUSE**  
· Manager  
· Bar Managers  
· Social Director  
· Catering/Events Officer  
· Maintenance  
· Bookings

**GOLF LIAISON**  
· Liaise with Match Committee  
· Regular Communication with Captains on all matters pertaining to the game of golf.  
· Tournament organisation

**PLAYER DEVELOPMENT & GRANTS**  
· Liaise with Women In Golf Group.  
· Adult and Junior programs & clinics.  
· Write grant applications for special projects.

**MARKETING, SPONSORSHIP & PROMOTIONS**  
· Communications  
· Social Media, Website.  
· Play & Stay packages.  
· Media relations  
· Sponsorship

-Andrew Steen  
-David Baker  
-

-Paul Robinson  
-Donald McNeur  
-

**SUB**

-Matthew Eddy  
-Phil Steers  
-  
-  
-

**COMMITTEE**

-Michelle Grady  
-Judy McLean  
-Kae Lummas  
-May Hamilton  
-Keith Seeber  
-Bev Jungwirth

**MEMBERS**

**Match Committee:**  
-Gary Ritchie (C)  
-Sarah Bullen (C)  
-Matt Mills  
-Keith Seeber  
-Ed Carracher  
-Michelle Thomson  
-Annette Smith  
-Erica Mercer  
**Tournament Organisers:**  
Brian Rosenbrock  
Mandy Edwards

-Matthew Mills  
-Judy McLean  
-Gail Allen  
-  
-  
-

-Jo Hoare  
-Veronica Doxey  
-Mandy Edwards  
-  
-  
-